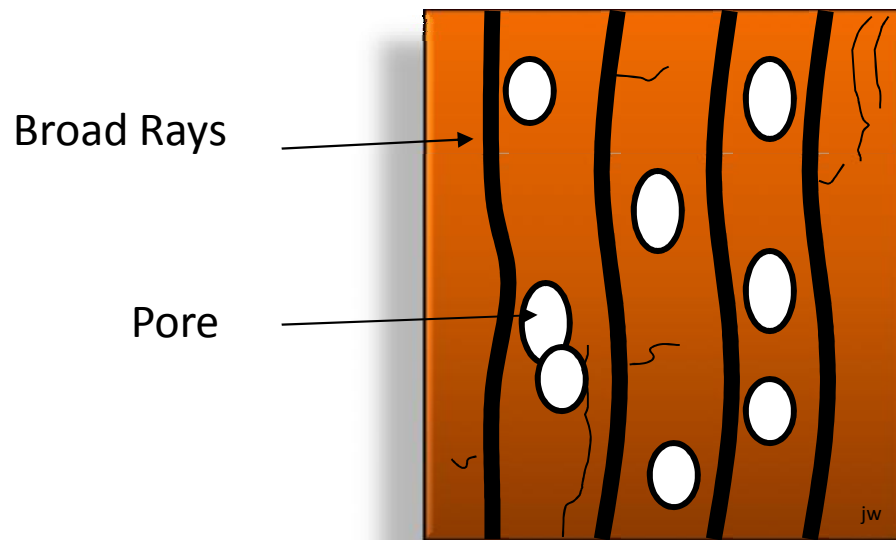


TYPES OF RAYS

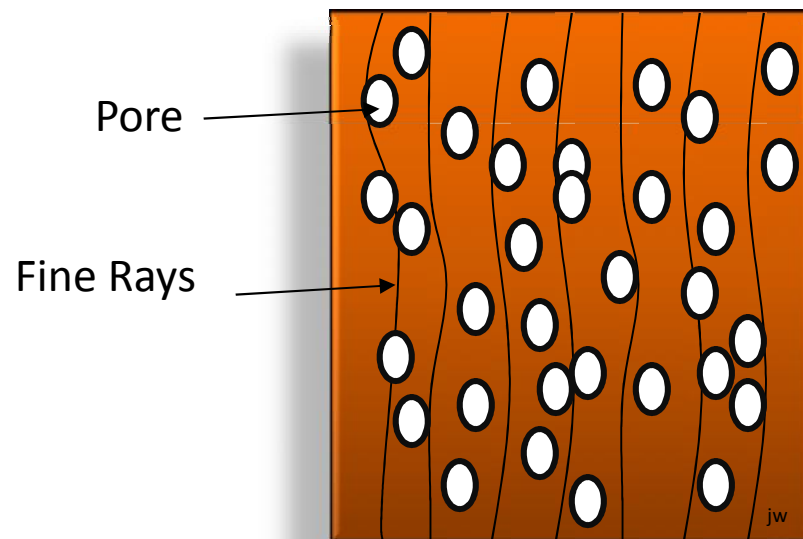
1. Broad and High



eg. Keruntum. Simpoh, Empenit,
Kepayang Babi

TYPES OF RAYS

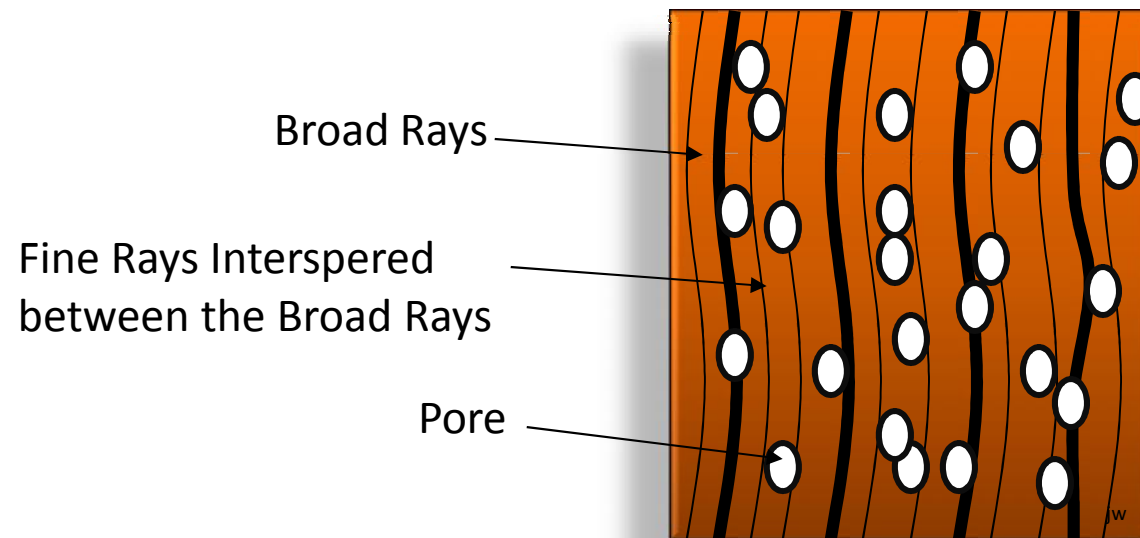
2. Narrow and Fine



eg. Ramin, Perupok, Terentang

TYPES OF RAYS

3. Rays of Two Distinct Sizes



eg. Keruing, Resak, Simpoh, Keruntum,
Kepayang Babi